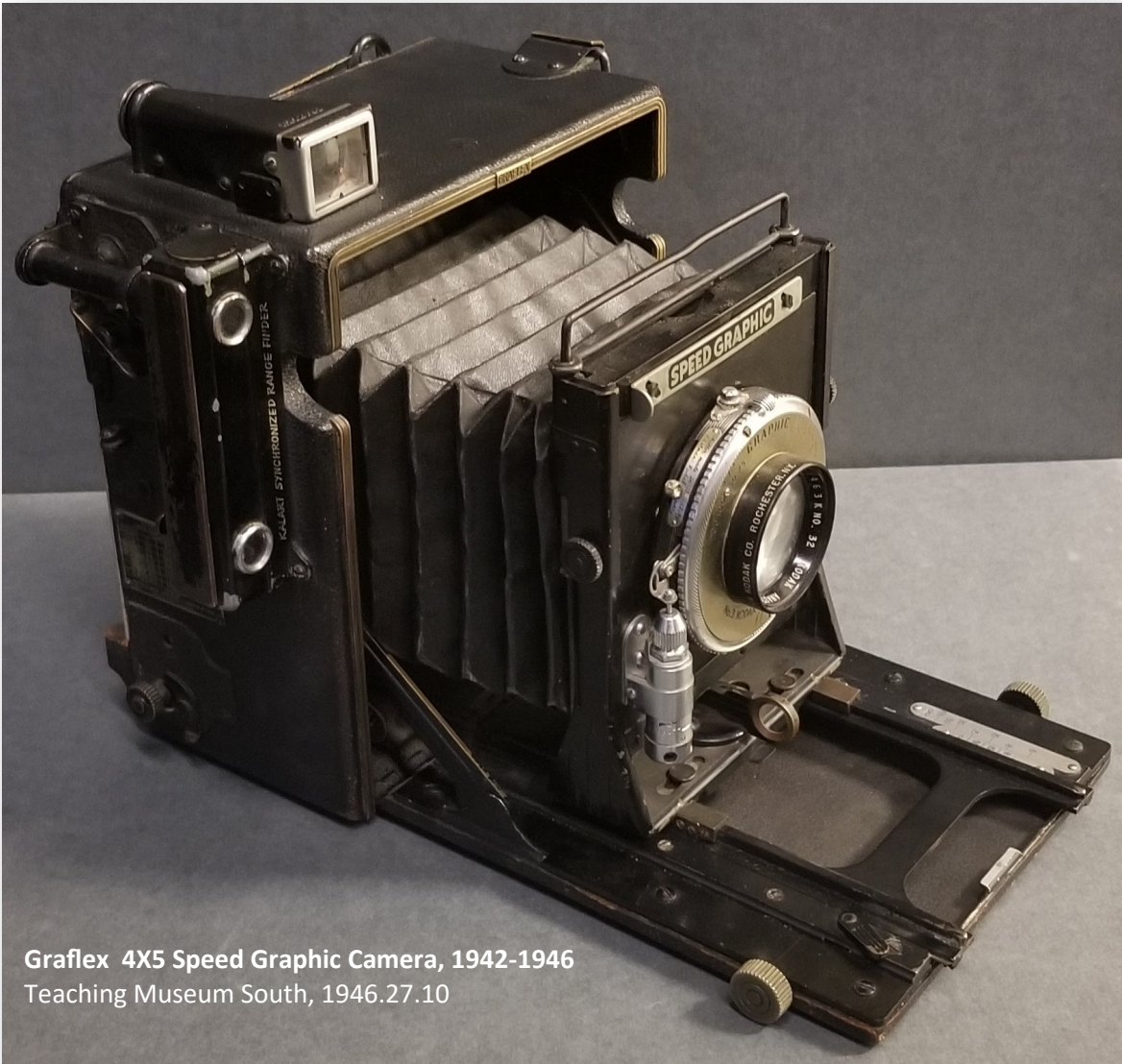


# [Curiosity] Corner

## Treasures from the FCS Archives

Welcome to **Treasures from the FCS Archives**, a repository of resources for teachers and history enthusiasts! Every month, we are sharing photos, artifacts, documents and other treasures for you to review, discuss and discover. We encourage you to click the links, scan the photos and dig deeper into these treasures, all of which can be found in the Fulton County Schools Archives. Enjoy!

### PHOTOGRAPHY AND THE TECHNOLOGY BEHIND IT



Graflex 4X5 Speed Graphic Camera, 1942-1946  
Teaching Museum South, 1946.27.10

Photographs have an enormous impact and have played an important role in our lives. They keep us connected through social media, help us preserve our past, function as a popular artistic medium and capture historic events. This month's edition of *Curiosity Corner* looks at photography through the technology that has made it possible, by highlighting a World War II era [Graflex Speed Graphic Camera](#) on display in the Teaching Museum South's "Instructional Tech" exhibit.

The Graflex was used by many famous photographers in the 1940s, such as Dorothea Lange and Ansel Adams, to take some of the most influential photographs in American history. Part of FCS Archives' [historic camera collection](#), this intriguing camera demonstrates one advancement in the long fascinating history of photography—a story that started over a thousand years ago in Arabia and ended up right in the palms of our hands, as the digital age brought photography to the smart phone.

Photography has played a significant role in our schools. At the height of its popularity, the Graflex was leading the way as the first tool for audio/visual learning, a new addition to instructional practice. In this edition, you will meet [Kathleen Moon](#), a pioneer in the field of audio/visual instruction, who taught right here in Fulton County Schools and whose work is considered both a lesson and an artform.

#### Curiosity in the Classroom: *A Closer Look*

Click on the image above for a higher resolution jpeg. Without telling students the title, context or the date of this object, ask student to look closely at the image.

**Ask students:**

- What do you see?
- What do you see that makes you say that?
- Can you identify specific parts of this object? What are their functions?
- When do you think this object was of common use?
- Who might have used this object?

Click [here](#) for a closer look at this historic camera, the Graflex 4x5 Speed Graphic Camera.

#### Lesson Ideas & Links: Connecting to Standards

<a href="#">Elementary School Connections</a>	<a href="#">Related Primary Sources</a>
<a href="#">Middle School Connections</a>	<a href="#">Ask the Teaching Museum</a>
<a href="#">High School Connections</a>	<a href="#">Additional Resources</a>

TEACHING  
MUSEUM  
Fulton County Schools

Fulton  
County Schools  
Archives

This publication is sponsored in part by the Library of Congress Teaching with Primary Sources Eastern Region Program, coordinated by Waynesburg University.

For more information and resources or to connect with staff at the **FCS Archives**, contact us at [archives@fultonschools.org](mailto:archives@fultonschools.org)